

# DWM 15 TORCIA MIG

RAFFREDDATA AD ARIA 180A CO<sub>2</sub>, 150A MIX GAS

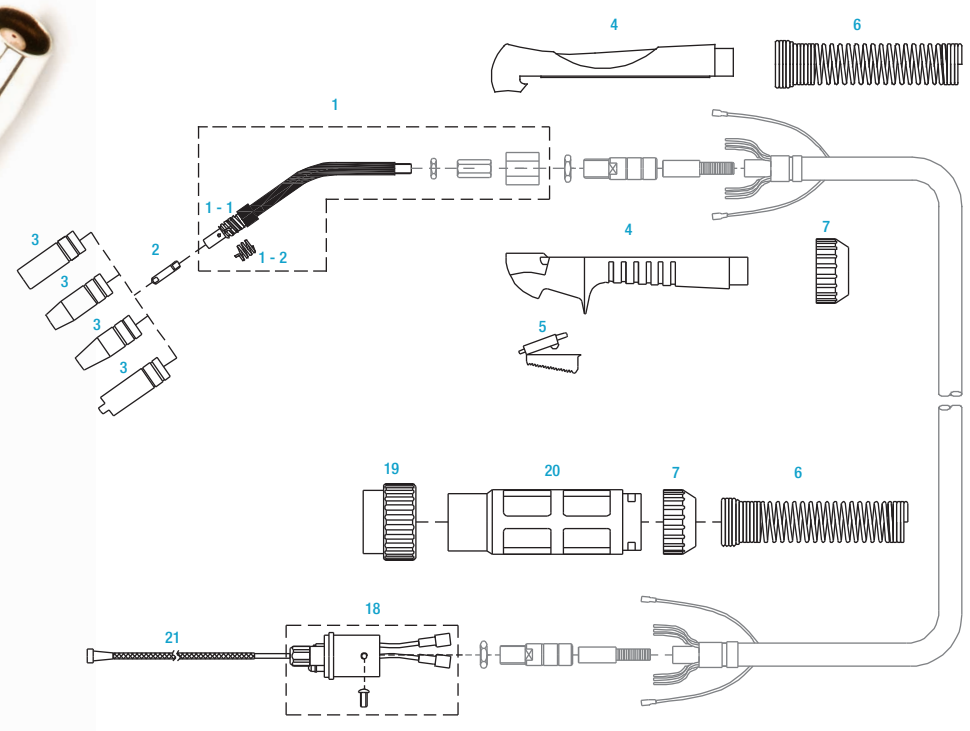
Air cooled MIG torch 180A CO<sub>2</sub>, 150A MIX GAS

57006001 Torcia MIG DWM 15 da 3m / ER - 150 - 3M - EURO® Torch

57006002 Torcia MIG DWM 15 da 4m / ER - 150 - 4M - EURO® Torch

57006630 Torcia MIG DWM 15 da 5m / ER - 150 - 5M - EURO® Torch

↓ **DESEGNI TECNICI**  
MECHANICAL DRAWING



COD. CODE	POS. ITEM	DESCRIZIONE DESCRIPTION
57006010	1	Corpo torcia 15 / Swan neck 150
57006011	1 - 1	Diffusore gas ottone / Gas nozzle support 150L
57006291	1 - 2	Molla diffusore gas / Spring for nozzle support 140/150
57006003	2	Ugello guidafilo M6 ø0,6mm / Contact tip M6 ø6*25L*ø0,6mm
57006004	2	Ugello guidafilo M6 ø0,8mm / Contact tip M6 ø6*25L*ø0,8mm
57006005	2	Ugello guidafilo M6 ø1,0mm / Contact tip M6 ø6*25L*ø1,0mm
57006007	3	Ugello gas cilindrico / Gas nozzle ø16mm / 53L
57006008	3	Ugello gas conico / Gas nozzle ø12mm / 53L
57006009	3	Ugello gas conico stretto / Gas nozzle ø9,5mm / 53L
57006281	4	Impugnatura / Handle set
57006285	5	Interruttore micro / Trigger-A type (Red)
57006854	7	Ghiera / Nut for handle (Black)
57006277	19	Ghiera di blocco / Connector nut EURO® (Black)
57006163	18	Connessione centrale / Connector nut EURO® spring pin (M12*1,25)
57006049	21	Spirale guidafilo blu 3m / Liner 3,4M for ø0,6-1,00mm (Blue)
57006048	21	Spirale guidafilo blu 4m / Liner 4,4M for ø0,6-1,00mm (Blue)
57006731	21	Spirale guidafilo blu 5m / Liner 5,4M for ø0,6-1,00mm (Blue)
57006109	6	Molla / Spring cable support
57006733	20	Protezione connessione centrale / Housing

# DWM 25 TORCIA MIG

## RAFFREDDATA AD ARIA 250A CO<sub>2</sub>, 220A MIX GAS

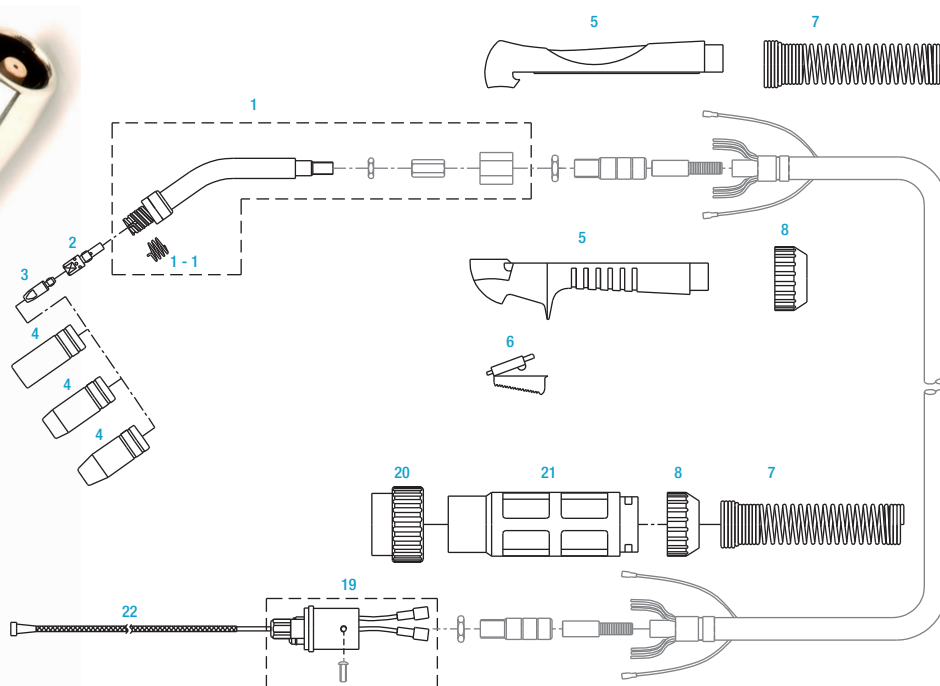
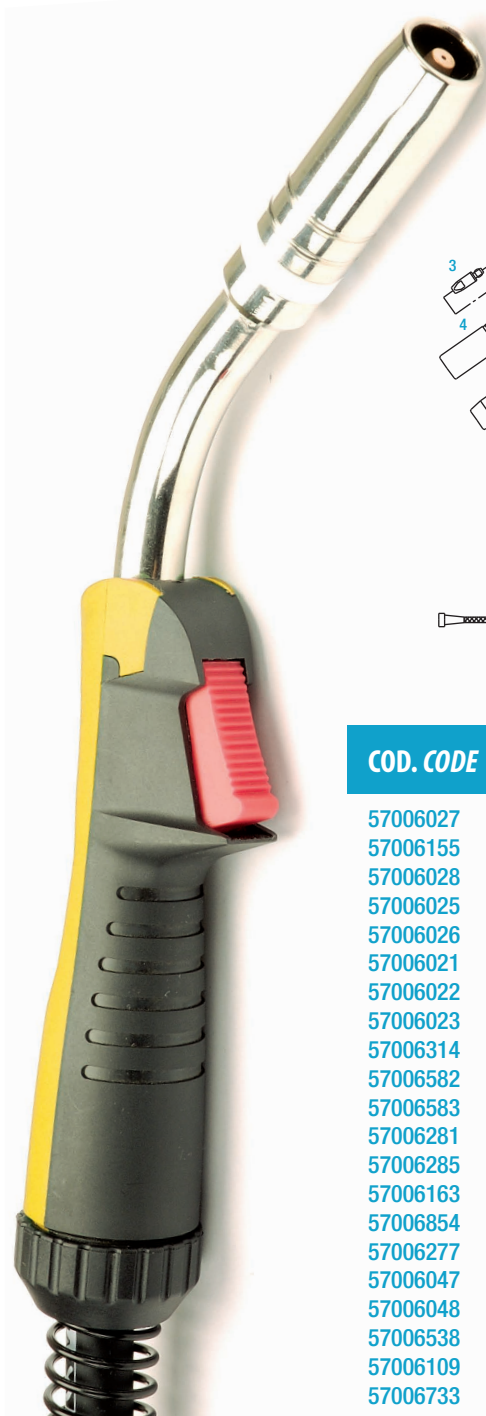
Air cooled MIG torch 250A CO<sub>2</sub>, 220A MIX GAS

57006018 Torcia MIG DWM 25 da 3m / ER - 250 - 3M - EURO® Torch

57006019 Torcia MIG DWM 25 da 4m / ER - 250 - 4M - EURO® Torch

57006099 Torcia MIG DWM 25 da 5m / ER - 250 - 5M - EURO® Torch

↓ **DISEGNI TECNICI**  
MECHANICAL DRAWING



COD. CODE	POS. ITEM	DESCRIZIONE DESCRIPTION
57006027	1	Corpo torcia 15 / Swan neck 250
57006155	1 - 1	Molla diffusore gas / Spring for nozzle support
57006028	2	Diffusore gas ottone / Tip holder 35mm
57006025	4	Ugello gas conico / Gas nozzle $\varnothing 15\text{mm}$ / 57L
57006026	4	Ugello gas conico stretto / Gas nozzle $\varnothing 11,5\text{mm}$ / 57L
57006021	3	Ugello guidafile M6 $\varnothing 0,8\text{mm}$ / Contact tip M6 $\varnothing 8*28\text{L}*\varnothing 0,8\text{mm}$
57006022	3	Ugello guidafile M6 $\varnothing 1,0\text{mm}$ / Contact tip M6 $\varnothing 8*28\text{L}*\varnothing 1,0\text{mm}$
57006023	3	Ugello guidafile M6 $\varnothing 1,2\text{mm}$ / Contact tip M6 $\varnothing 8*28\text{L}*\varnothing 1,2\text{mm}$
57006314	3	Ugello guidafile M6*28- $\varnothing 0,8\text{mm}$ special / Contact tip M6 $\varnothing 8*28\text{L}*\varnothing 0,8\text{mm}$ CUCRZR
57006582	3	Ugello guidafile M6*28- $\varnothing 1,0\text{mm}$ special / Contact tip M6 $\varnothing 8*28\text{L}*\varnothing 1,0\text{mm}$ CUCRZR
57006583	3	Ugello guidafile M6*28- $\varnothing 1,2\text{mm}$ special / Contact tip M6 $\varnothing 8*28\text{L}*\varnothing 1,2\text{mm}$ CUCRZR
57006281	5	Impugnatura / Handle set
57006285	6	Interruttore micro / Trigger-A type (Red)
57006163	19	Connessione centrale / Central connector nut EURO® spring pin (M10*1,0)
57006854	8	Ghiera / Nut for handle (Black)
57006277	20	Ghiera di blocco / Central connector nut EURO®
57006047	22	Spirale guidafile rosso 3m / Liner 3,4M for $\varnothing 0,9-1,2\text{mm}$ (Red)
57006048	22	Spirale guidafile rosso 4m / Liner 4,4M for $\varnothing 0,9-1,2\text{mm}$ (Red)
57006538	22	Spirale guidafile rosso 5m / Liner 5,4M for $\varnothing 0,9-1,2\text{mm}$ (Red)
57006109	7	Molla / Spring cable support
57006733	21	Protezione connessione centrale / Housing

# DWM 26 TORCIA MIG

## RAFFREDDATA AD ARIA 290A CO<sub>2</sub>, 260A MIX GAS

Air cooled TIG torch 125A CO<sub>2</sub>, 260A MIX GAS

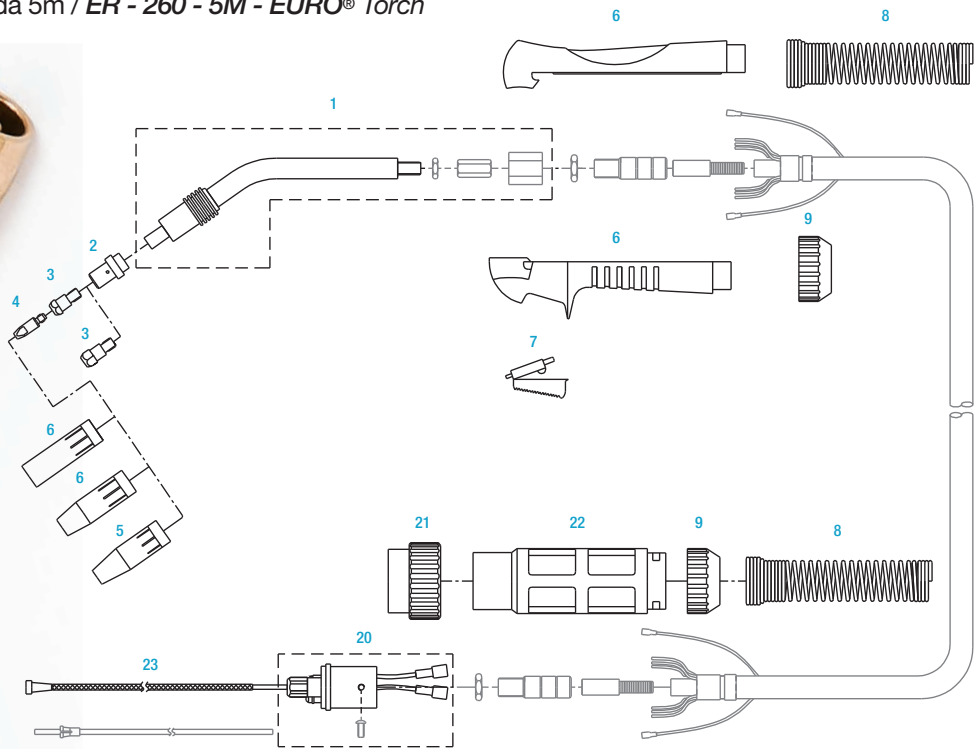
3

57006029 Torcia MIG DWM 26 da 3m / ER - 250 - 3M - EURO® Torch

57006030 Torcia MIG DWM 26 da 4m / ER - 260 - 4M - EURO® Torch

57006214 Torcia MIG DWM 26 da 5m / ER - 260 - 5M - EURO® Torch

↓ **DESGNI TECNICI**  
MECHANICAL DRAWING



COD. CODE	POS. ITEM	DESCRIZIONE DESCRIPTION
57006034	1	Corpo torcia / Swan neck 260
57006035	2	Diffusore gas isolante bianco / Gas diffuser (White)
57006037	3	Diffusore gas ottone / Tip holder M8 - 6 22L
57006032	5	Ugello gas conico / Gas nozzle $\varnothing 19\text{mm}$ / 76L
57006021	4	Ugello guidafile M6*28- $\varnothing 0,8\text{mm}$ / Contact tip M6 $\varnothing 8*28\text{L}*\varnothing 0,8\text{mm}$
57006022	4	Ugello guidafile M6*28- $\varnothing 1,0\text{mm}$ / Contact tip M6 $\varnothing 8*28\text{L}*\varnothing 1,0\text{mm}$
57006023	4	Ugello guidafile M6*28- $\varnothing 1,2\text{mm}$ / Contact tip M6 $\varnothing 8*28\text{L}*\varnothing 1,2\text{mm}$
57006314	4	Ugello guidafile M6*28- $\varnothing 0,8\text{mm}$ special / Contact tip M6 $\varnothing 8*28\text{L}*\varnothing 0,8\text{mm}$ CUCRZR
57006582	4	Ugello guidafile M6*28- $\varnothing 1,0\text{mm}$ special / Contact tip M6 $\varnothing 8*28\text{L}*\varnothing 1,0\text{mm}$ CUCRZR
57006583	4	Ugello guidafile M6*28- $\varnothing 1,2\text{mm}$ special / Contact tip M6 $\varnothing 8*28\text{L}*\varnothing 1,2\text{mm}$ CUCRZR
57006281	6	Impugnatura / Handle set
57006285	7	Interruttore micro / Trigger-A type (Red)
57006163	20	Connessione centrale / Connector EURO® spring pin (M12*1,25)
57006854	9	Ghiera / Nut for handle (Black)
57006277	21	Ghiera di blocco / Connector nut EURO®
57006047	23	Spirale guidafile rosso 3m / Liner 3,4M for $\varnothing 0,9-1,2\text{mm}$ (Red)
57006048	23	Spirale guidafile rosso 4m / Liner 4,4M for $\varnothing 0,9-1,2\text{mm}$ (Red)
57006538	23	Spirale guidafile rosso 5m / Liner 5,4M for $\varnothing 0,9-1,2\text{mm}$ (Red)
57006109	8	Molla / Spring cable support
57006733	22	Protezione connessione centrale / Housing

# DWM 36 TORCIA MIG

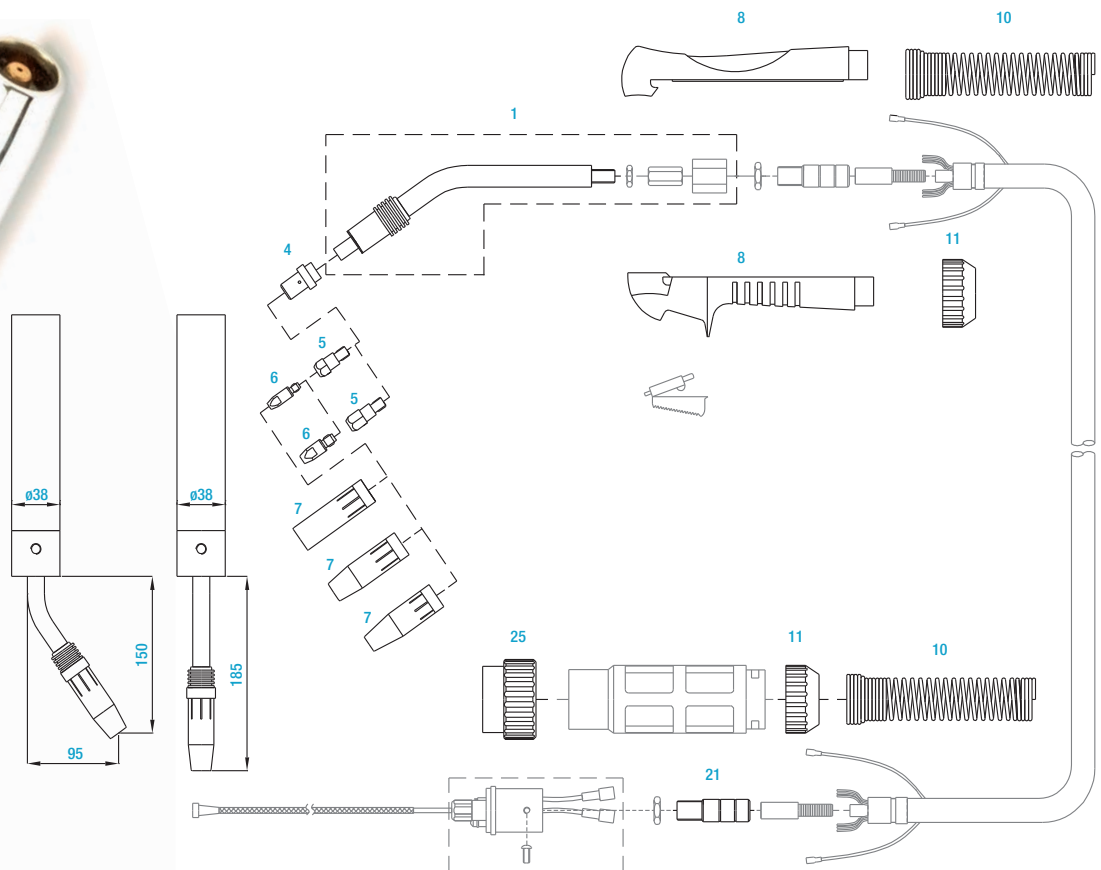
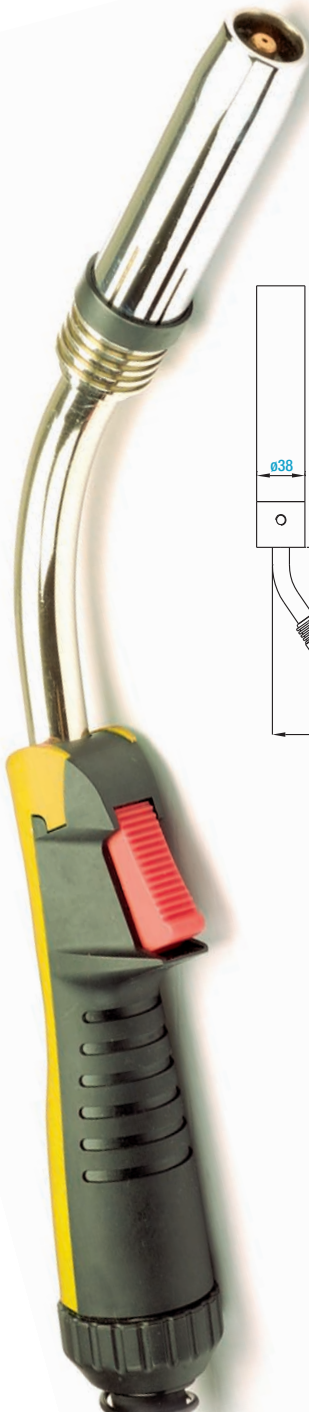
## RAFFREDDATA AD ARIA 340A CO<sub>2</sub>, 320A MIX GAS

Air cooled MIG torch 340A CO<sub>2</sub>, 320A MIX GAS

4

- 57006038** Torcia MIG DWM 36 da 3m / ER - 360 - 3M - EURO® Torch  
**57006039** Torcia MIG DWM 36 da 4m / ER - 360 - 4M - EURO® Torch  
**57006130** Torcia MIG DWM 36 da 5m / ER - 360 - 5M - EURO® Torch

↓ **DESGNI TECNICI**  
MECHANICAL DRAWING



COD. CODE	POS. ITEM	DESCRIZIONE DESCRIPTION
57006043	1	Corpo torcia / Swan neck ER - 360
57006046	5	Diffusore gas ottone / Tip holder M8-6 28L
57006044	4	Diffusore gas isolante bianco / Gas diffuser (White)
57006021	6	Ugello guidafile M6*28-0,8mm / Contact tip M6 08*28L*0,8mm
57006022	6	Ugello guidafile M6*28-0,1,0mm / Contact tip M6 08*28L*0,1,0mm
57006023	6	Ugello guidafile M6*28-0,1,2mm / Contact tip M6 08*28L*0,1,2mm
57006314	6	Ugello guidafile M6*28-0,8mm special / Contact tip M6 08*28L*0,8mm CUCRZR
57006582	6	Ugello guidafile M6*28-0,1,0mm special / Contact tip M6 08*28L*0,1,0mm CUCRZR
57006583	6	Ugello guidafile M6*28-0,1,2mm special / Contact tip M6 08*28L*0,1,2mm CUCRZR
57006041	7	Ugello gas conico / Gas nozzle 016mm / 84L
57006277	8	Impugnatura / Handle set
57006854	11	Ghiera / Nut for handle (Black)
57006277	25	Ghiera di blocco / Connector nut EURO® (Black)
57006109	10	Molla / Spring cable support
57006109	22	Protezione connessione centrale / Housing

# DWM 501 TORCIA MIG

RAFFREDDATA AD ACQUA 600A CO<sub>2</sub>, 450A MIX GAS

Water cooled MIG torch 600A CO<sub>2</sub>, 450A MIX GAS

5

**57006129** Torcia MIG DWM 501 da 3m / ER - 500 - 3M - EURO® Torch

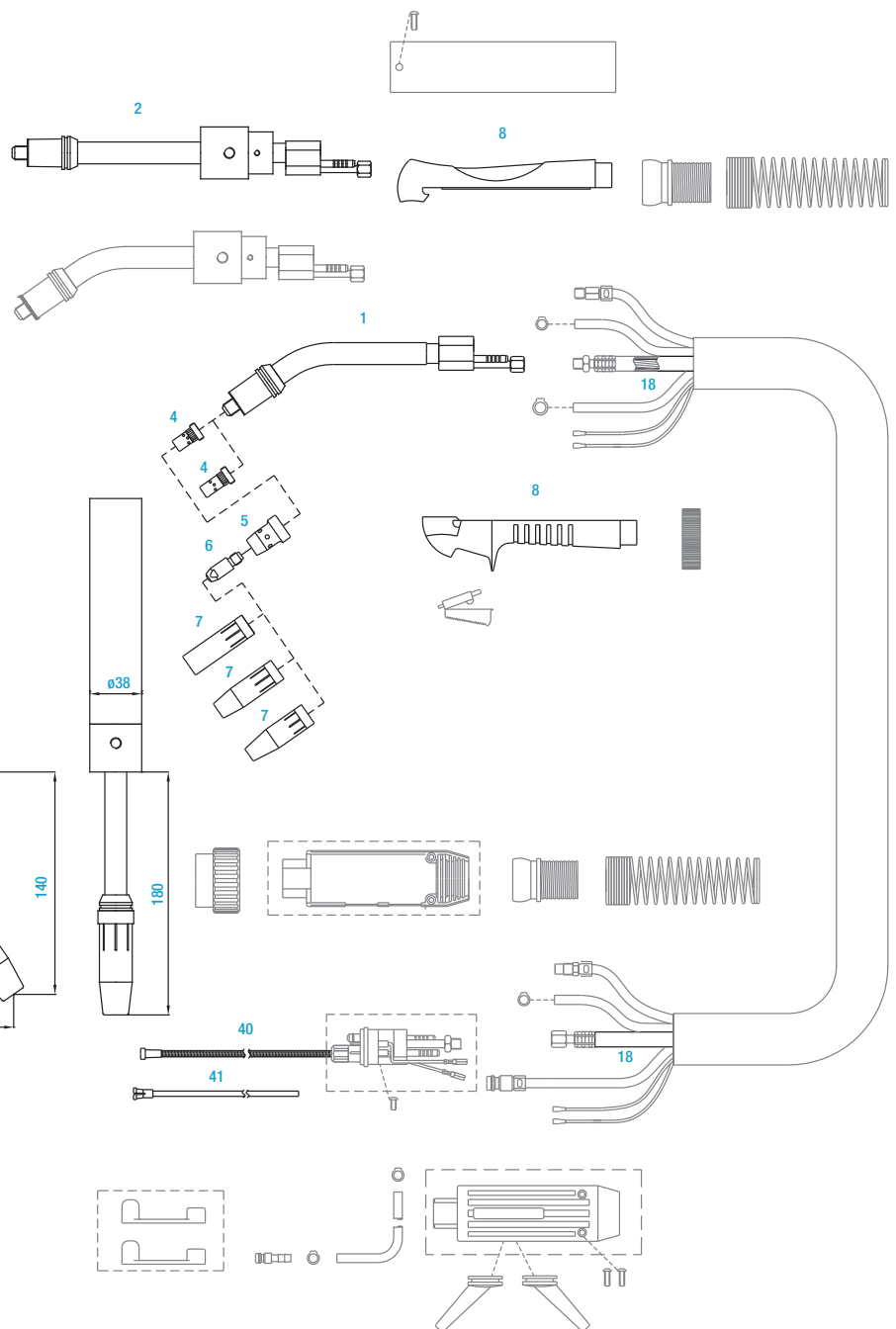
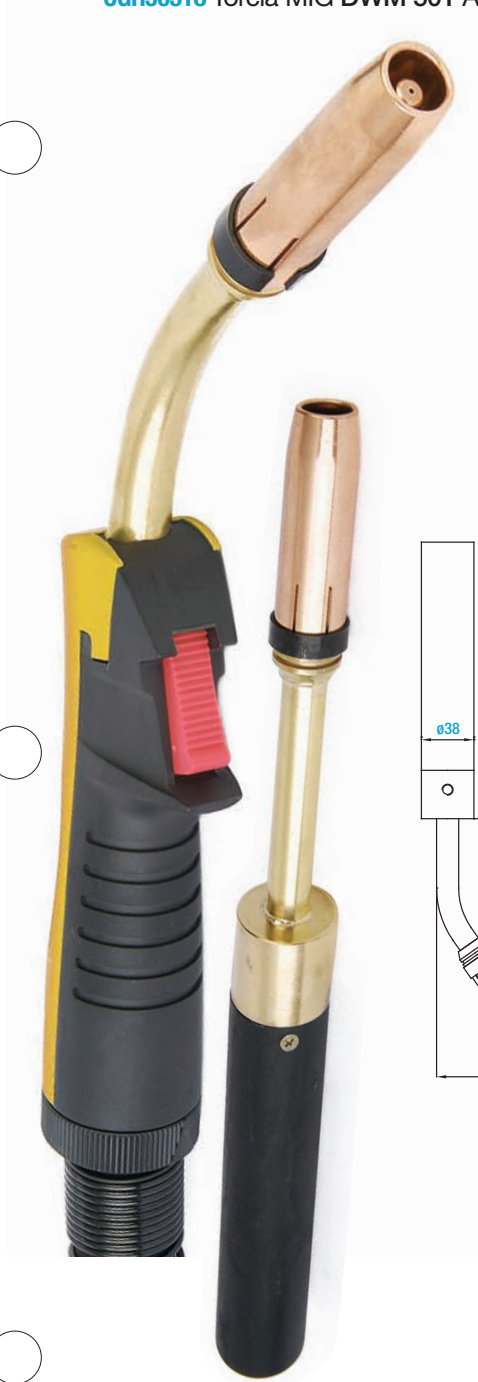
**57006060** Torcia MIG DWM 501 da 4m / ER - 500 - 4M - EURO® Torch

**57006620** Torcia MIG DWM 501 da 5m / ER - 500 - 5M - EURO® Torch

**57006774** Torcia MIG DWM 501 AUT.45° / AUTO 45° - 3M - EURO® Torch

**CGH50318** Torcia MIG DWM 501 AUT.180° / AUTO STRAIGHT - 3M - EURO® Torch

↓ **DISEGNI TECNICI**  
MECHANICAL DRAWING



# DWM 501 TORCIA MIG

## RAFFREDDATA AD ACQUA 600A CO<sub>2</sub>, 450A MIX GAS

Water cooled MIG torch 600A CO<sub>2</sub>, 450A MIX GAS

5

CODICE CODE	POSIZIONE ITEM	DESCRIZIONE DESCRIPTION
57006061	1	Corpo torcia/lungo / <i>Swan neck 500</i>
57006252	2	Corpo torcia auto / <i>Swan neck 500 auto - straight</i>
57006059	4	Diffusore gas ottone / <i>Tip holder M10-6 25L</i>
57006057	5	Diffusore gas isolante bianco / <i>Gas diffuser 28L (White)</i>
57006053	6	Ugello guidafile M8*30-ø0,8mm / <i>Contact tip M8 ø10*30L*ø0,8mm</i>
57006087	6	Ugello guidafile M8*30-ø1,0mm / <i>Contact tip M8 ø10*30L*ø1,0mm</i>
57006055	6	Ugello guidafile M8*30-ø1,2mm / <i>Contact tip M8 ø10*30L*ø1,2mm</i>
57006636	6	Ugello guidafile M8*30-ø0,8mm special / <i>Contact tip M8 ø10*30L*ø0,8mm CUCRZR</i>
57006399	6	Ugello guidafile M8*30-ø1,0mm special / <i>Contact tip M8 ø10*30L*ø1,0mm CUCRZR</i>
57006426	6	Ugello guidafile M8*30-ø1,2mm special / <i>Contact tip M8 ø10*30L*ø1,2mm CUCRZR</i>
57006285	9	Interruttore micro / <i>Trigger-A type (Red)</i>
57006245	18	Cavo portacorrente 4m / <i>Hose rubber braided black EPDM ø13,5*8mm</i>
57006032	7	Ugello gas conico / <i>Gas nozzle ø19mm / 76L</i>
57006533	8	Impugnatura / <i>Handle set</i>
57006532	40	Spirale guidafile acciaio 3m / <i>Liner-steel 3,4M for ø1,0-1,6mm</i>
57006050	40	Spirale guidafile acciaio 4m / <i>Liner-steel 4,4M for ø1,0-1,6mm</i>
57006533	41	Spirale guidafile acciaio 5m / <i>Liner-steel 5,4M for ø1,0-1,6mm</i>
57006087	6	Ugello guidafile M8*30-ø1,6mm / <i>Contact tip M8 ø10*30L*ø1,6mm</i>

# BND 300A TORCIA BND

## RAFFREDDATA AD ARIA

CICLO DI LAVORO: 300A CO<sub>2</sub> GAS 60%  
200A MIXED GAS 60%

**Air cooled BND torch**

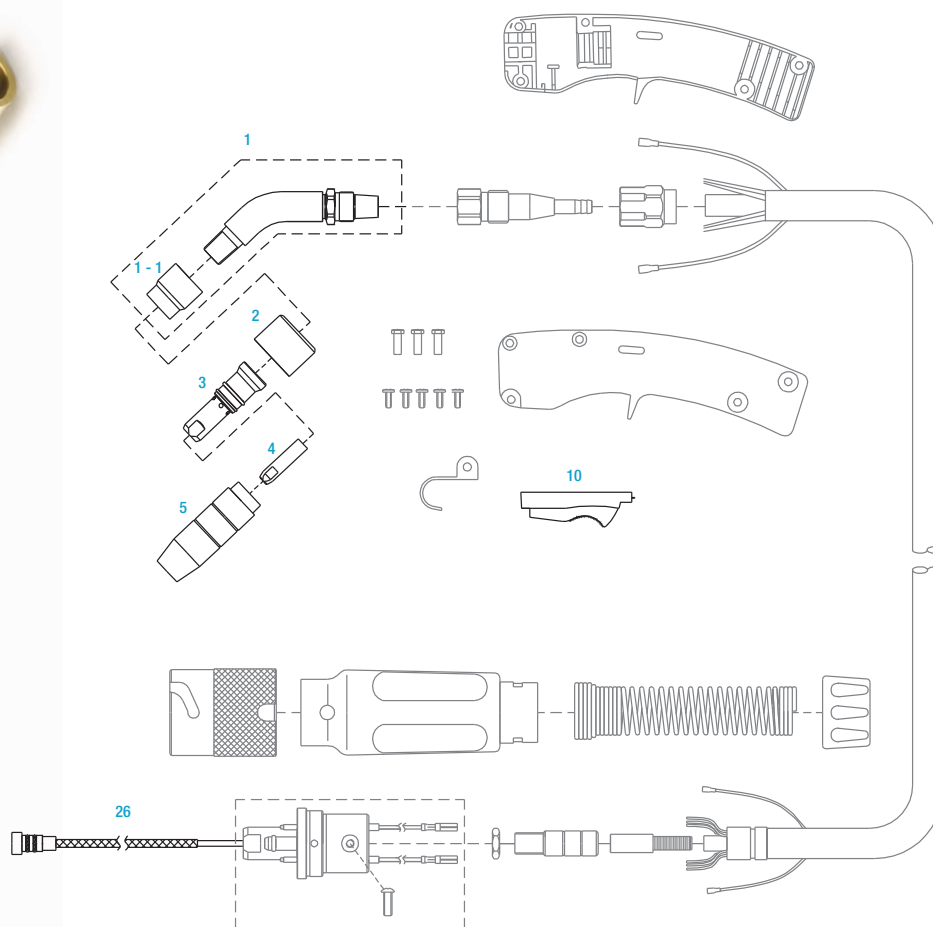
duty cycle: 300A CO<sub>2</sub> GAS 60%, 200A MIXED GAS 60%

6

57006093 Torcia BND 300A da 3m / BN - EZ - 300A - 3M - Q.D Torch

57006837 Torcia BND 300A da 4m / BN - EZ - 300A - 4M - Q.D Torch

↓ **DISEGNI TECNICI**  
MECHANICAL DRAWING



COD. CODE	POS. ITEM	DESCRIZIONE DESCRIPTION
57006838	5	Ugello gas ø13mm / 60L / Gas nozzle ø13mm / 60L brass
57006839	10	Interruttore micro BN / Trigger 300A
57006840	4	Ugello guidafilo lunghezza M8*31-ø1,2mm / Tip M8*31-ø1,2mm E-CU
57006841	4	Ugello guidafilo lunghezza M8*31-ø1,4mm / Tip M8*31-ø1,4mm E-CU
57006842	26	Spirale 5m BN 4,0/1,6 / Liner 5m BN 4,0/1,6
57006843	5	Ugello gas ø16mm / 60L / Nozzle ø16mm / 60L brass
57006844	4	Ugello guidafilo 31,8L - ø1,0mm / Tip M8*31-ø1,0mm E-CU
57006845	1	Corpo torcia con isolatore / Swan neck W / Lock insulator 200/300A
57006846	3	Diffusore gas ottone 300 BN / Tip holder
57006847	2	Isolante diffusore 300 BN / Cap
57006848	1 - 1	Isolante corpo torcia 300 BN / Locknut insulator

# DWT 9 TORCIA TIG

RAFFREDDATA AD ARIA 125A, CICLO DI LAVORO: 60%

Air cooled TIG torch 125A, duty cycle: 60%

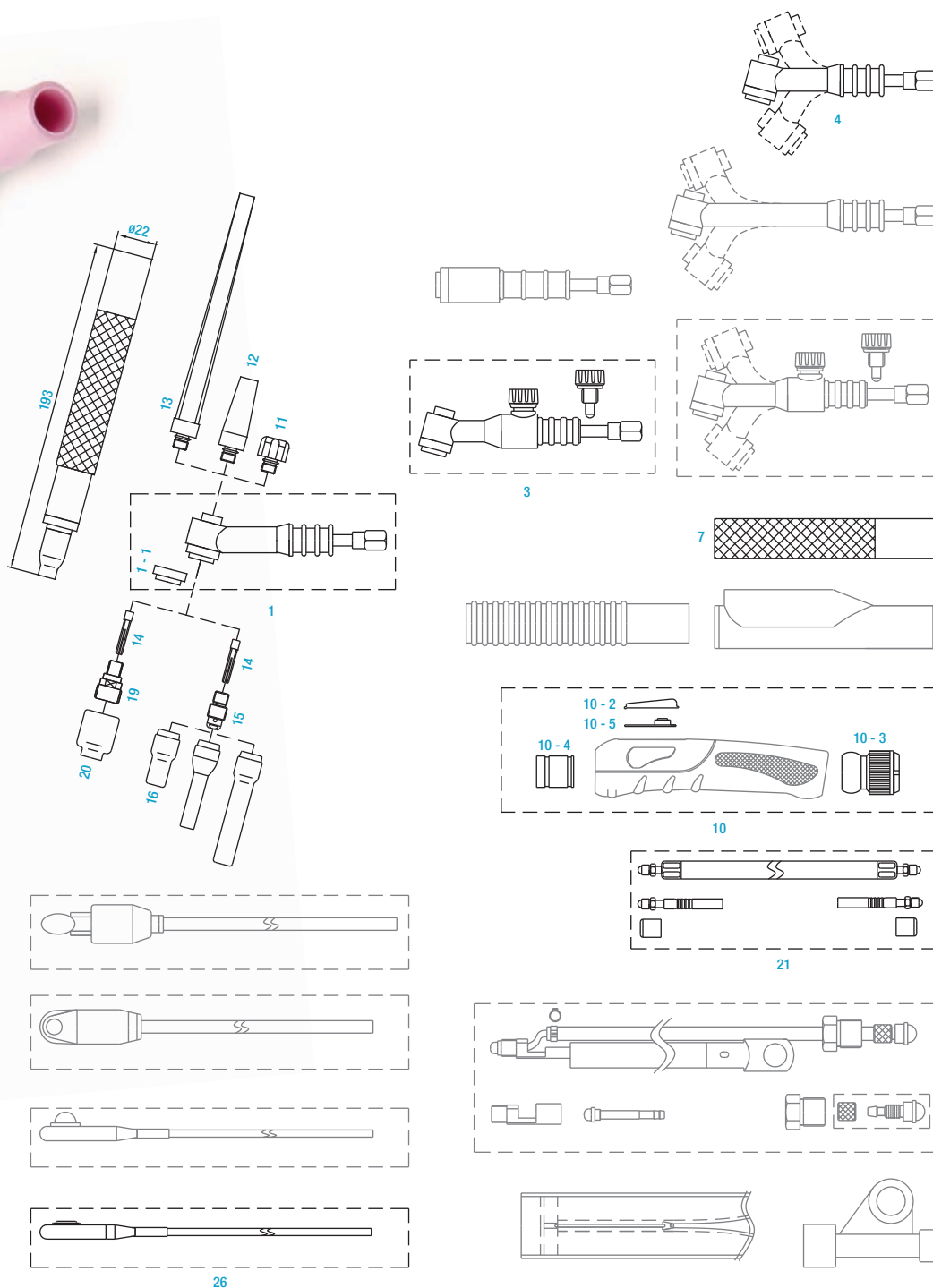
7

57006555 Torcia TIG WP 9 - 12 - 1 - RB TRF / WP - 9 - 12ft 2PC Torch Package

57006727 Torcia TIG WP 9 - 25 - 1 - RB TRF / WP - 9 - 12ft 2PC Torch Package

57006853 Torcia TIG WP 9V- 25 - 1 RB - H 100 R / WP - 9 - 12ft 1PC Torch Package

↓ **DISEGNI TECNICI**  
MECHANICAL DRAWING





# DWT 9 TORCIA TIG

## RAFFREDDATA AD ARIA 125A, CICLO DI LAVORO: 60%

Air cooled TIG torch 125A, duty cycle: 60%

7

CODICE CODE	POSIZIONE ITEM	DESCRIZIONE DESCRIPTION
57006278	1	Corpo torcia / WP - 9 torch body
57006730	1 - 1	Isolante / Cup gasket
57006729	3	Corpo torcia con valvola / WP - 9 torch body argon valve
57006368	4	Corpo torcia flessibile / Flexible torch body
57006332	11	Cappa corta / Short back cap
57006168	12	Cappa media / Medium back cap
57006331	13	Cappa lunga / Long back cap 146L
57006170	14	Serra elettrodo $\varnothing$ 1,6mm / Collect $\varnothing$ 1,6mm
57006390	14	Serra elettrodo $\varnothing$ 2,4mm / Collect $\varnothing$ 2,4mm
57006303	14	Serra elettrodo $\varnothing$ 3,2mm / Collect $\varnothing$ 3,2mm
57006366	15	Ferma serralettrodo $\varnothing$ 1,6mm / Collect body $\varnothing$ 1,6mm
57006365	15	Ferma serralettrodo $\varnothing$ 2,4mm / Collect body $\varnothing$ 2,4mm
57006305	15	Ferma serralettrodo $\varnothing$ 3,2mm / Collect body $\varnothing$ 3,2mm
57006575	16	Ugello ceramico Gr. 4 - 6,4mm / Standard nozzle #4 - 6,4mm
57006576	16	Ugello ceramico Gr. 5 - 8mm / Standard nozzle #5 - 8mm
57006577	16	Ugello ceramico Gr. 6 - 9,6mm / Standard nozzle #6 - 9,6mm
57006585	16	Ugello ceramico Gr. 7 - 11,2mm / Standard nozzle #7 - 11,2mm
57006264	19	Diffusore gas lens 1,6mm / Gaslens collect body 1,6mm
57006266	19	Diffusore gas lens 2,4mm / Gaslens collect body 2,4mm
57006268	19	Diffusore gas lens 3,2mm / Gaslens collect body 3,2mm
57006182	20	Ugello ceramico gas lens Gr. 4 - 6,4mm / Gaslens nozzle #4 - 6,4mm
57006169	20	Ugello ceramico gas lens Gr. 5 - 6,4mm / Gaslens nozzle #5 - 9,6mm
57006183	20	Ugello ceramico gas lens Gr. 6 - 9,6mm / Gaslens nozzle #6 - 9,6mm
57006308	20	Ugello ceramico gas lens Gr. 7 - 11,2mm / Gaslens nozzle #7 - 11,2mm
57006282	7	Impugnatura tonda / Handle
57006282	10	Impugnatura TFM / Handle set w / ball joint ble TFM
57006863	10 - 2	Coprimicro / Touchor red handle TFM
57006864	10 - 3	Gomma sostegno cavo / Back ring set for WP - 9 handle TFM
57006865	10 - 4	Gomma sostegno collo / Front ring set for WP - 9
57006290	10 - 5	Micro per TFM / S.W pcb TFM
57006290	26	Micro switch corazzato / Switch w
57006635	21	Cavo corrente/gas 4m / Power cable 12ft
57006725	21	Cavo corrente/gas 8m / Power cable 25ft

# DWT 17 TORCIA TIG

RAFFREDDATA AD ARIA 150A, CICLO DI LAVORO: 60%

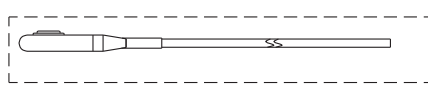
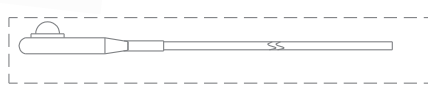
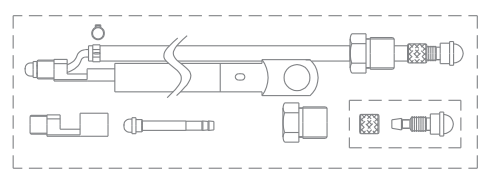
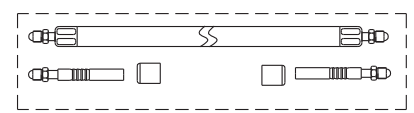
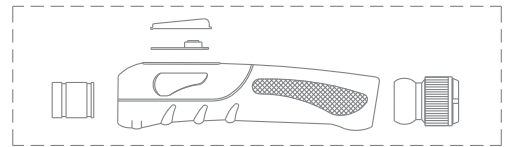
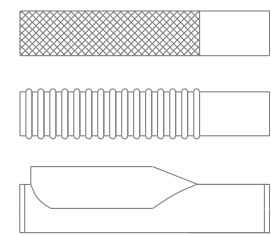
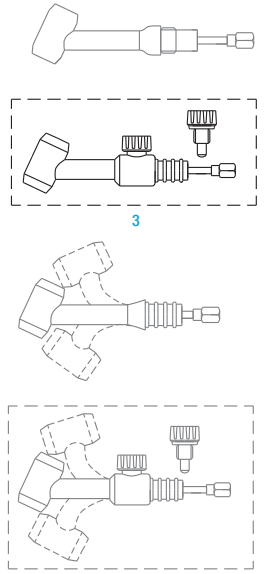
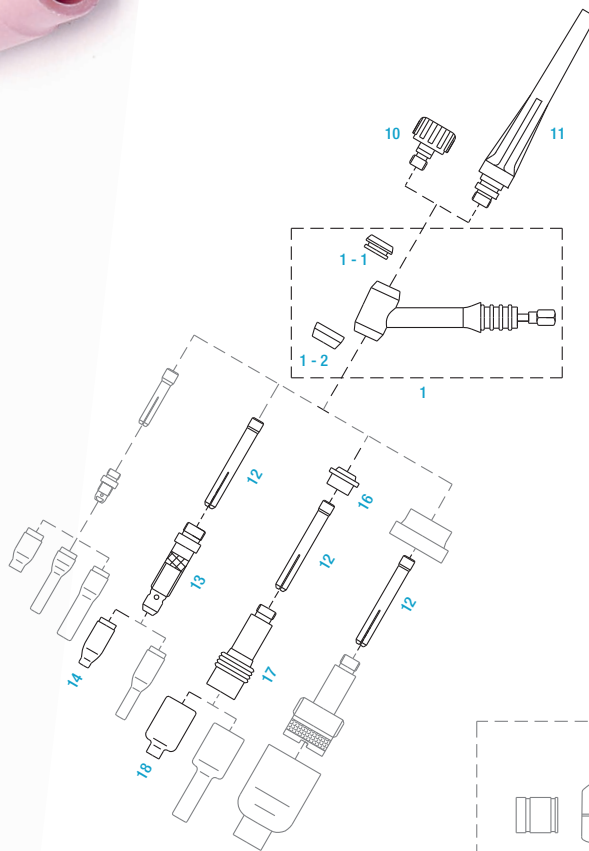
Air cooled TIG torch 150A, duty cycle: 60%

57006069 Torcia TIG WP 17 - 25 - 1 - RB TRF / WP - 17 - 12ft 2PC Torch Package

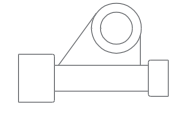
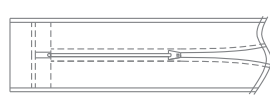
57006068 Torcia TIG WP 17 - 12 - 1 - RB TRF / WP - 17 - 25ft 2PC Torch Package

57006098 Torcia TIG WP 17V- 25 - 1 RB - H 100 R / WP - 17 - 12ft 1PC Torch Package

↓ **DISEGNI TECNICI**  
MECHANICAL DRAWING



33



# DWT 17 TORCIA TIG

## RAFFREDDATA AD ARIA 150A, CICLO DI LAVORO: 60%

Air cooled TIG torch 150A, duty cycle: 60%

8

CODICE CODE	POSIZIONE ITEM	DESCRIZIONE DESCRIPTION
57006457	1	Corpo torcia / Torch body
57006289	1 - 1	Isolante cappa / Standard heatshield - 1
57006287	1 - 2	Isolante ferma serra elettrodo / Standard heatshield - 1 cup gasket
57006734	3	WP 17V / Torch body argon valve
570006333	11	Cappa lunga / Long back cap
57006334	10	Cappa corta / Short back cap
57006377	12	Serra elettrodo ø1,6mm / Collect ø1,6mm
57006125	12	Serra elettrodo ø2,4mm / Collect ø2,4mm
57006312	12	Serra elettrodo ø3,2mm / Collect ø3,2mm
57006320	12	Serra elettrodo ø4,0mm / Collect ø4,0mm
57006325	13	Ferma serralettrodo ø1,6mm / Collect body ø1,6mm
57006326	13	Ferma serralettrodo ø2,4mm / Collect body ø2,4mm
57006175	13	Ferma serralettrodo ø3,2mm / Collect body ø3,2mm
57006275	13	Ferma serralettrodo ø4,0mm / Collect body ø4,0mm
57006482	14	Ugello ceramico Gr. 4 - ø6,4mm / Standard nozzle #4 - 6,4mm
57006423	14	Ugello ceramico Gr. 5 - ø8mm / Standard nozzle #5 - 8mm
57006310	14	Ugello ceramico Gr. 6 - ø9,6mm / Standard nozzle #6 - 9,6mm
57006311	14	Ugello ceramico Gr. 7 - ø11,2mm / Standard nozzle #7 - 11,2mm
57006301	14	Ugello ceramico Gr. 8 - ø12,8mm / Standard nozzle #8 - 12,8mm
57006289	16	Isolatore per diffusore / Gaslens insulator
57006673	17	Diffusore gas lens ø1,6mm / Gaslens collect body 1,6mm
57006120	17	Diffusore gas lens ø2,4mm / Gaslens collect body 2,4mm
57006124	17	Diffusore gas lens ø3,2mm / Gaslens collect body 3,2mm
CHT54N18	18	Ugello ceramico gas lens Gr. 4 - ø6,4mm / Gaslens nozzle #4 - 6,4mm
57006122	18	Ugello ceramico gas lens Gr. 5 - ø8,0mm / Gaslens nozzle #5 - 8mm
57006121	18	Ugello ceramico gas lens Gr. 6 - ø9,6mm / Gaslens nozzle #6 - 9,6mm
57006123	18	Ugello ceramico gas lens Gr. 7 - ø11,2mm / Gaslens nozzle #7 - 11,2mm
57006309	18	Ugello ceramico gas lens Gr. 8 - ø12,8mm / Gaslens nozzle #8 - 12,8mm
57006290	33	Micro swich corazzato / 950/F switch w/ 12 ft S.W. Cable
57006635	28	Cavo corrente/gas 4m / Power cable 2ft
57006725	28	Cavo corrente/gas 8m / Power cable 25ft

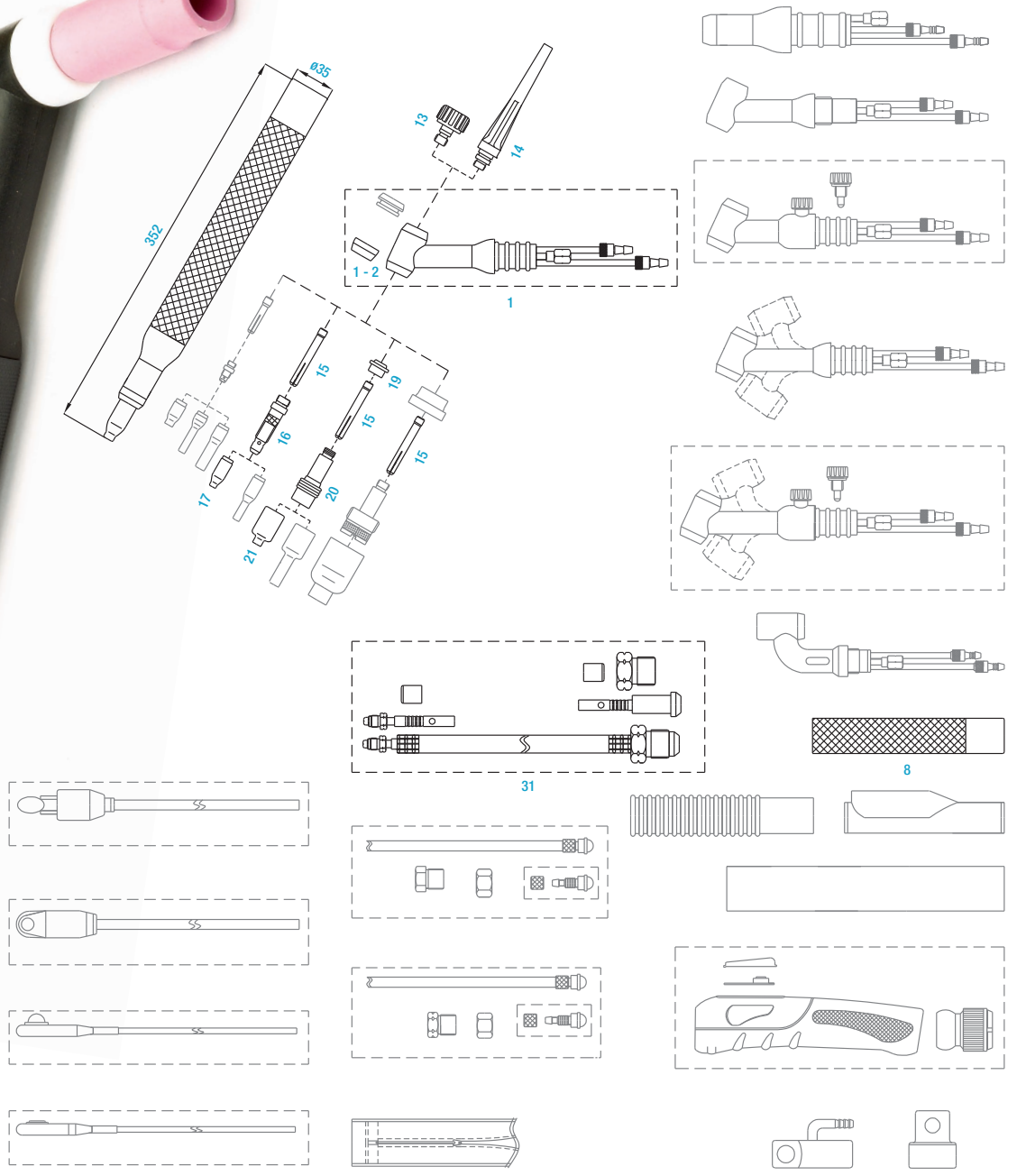
# DWT 18 TORCIA TIG

RAFFREDDATA AD ACQUA 350A, CICLO DI LAVORO: 60%

Water cooled TIG torch 350A, duty cycle: 60%

57006069 Torcia TIG WP 18 - 12 - 1 - RB TRF / WP - 18 - 12ft Torch PVC cable, soft, hose  
57006068 Torcia TIG WP 18 - 25 - 1 - RB TRF / WP - 18 - 25ft Torch PVC cable, soft, hose

↓ **DISEGNI TECNICI**  
MECHANICAL DRAWING



# DWT 18 TORCIA TIG

## RAFFREDDATA AD ACQUA 350A, CICLO DI LAVORO: 60%

Water cooled TIG torch 350A, duty cycle: 60%

9

CODICE CODE	POSIZIONE ITEM	DESCRIZIONE DESCRIPTION
57006457	1	Corpo torcia / Torch body
57006287	1 - 2	Isolante ferma serra elettrodo / Cup gasket
570006334	13	Cappa corta / Short back cap
570006333	14	Cappa lunga / Long back cap
57006377	15	Serra elettrodo $\varnothing$ 1,6mm / Collect $\varnothing$ 1,6mm
57006125	15	Serra elettrodo $\varnothing$ 2,4mm / Collect $\varnothing$ 2,4mm
57006312	15	Serra elettrodo $\varnothing$ 3,2mm / Collect $\varnothing$ 3,2mm
57006320	15	Serra elettrodo $\varnothing$ 4,0mm / Collect $\varnothing$ 4,0mm
57006325	16	Ferma serralettrodo $\varnothing$ 1,6mm / Collect body $\varnothing$ 1,6mm
57006326	16	Ferma serralettrodo $\varnothing$ 2,4mm / Collect body $\varnothing$ 2,4mm
57006175	16	Ferma serralettrodo $\varnothing$ 3,2mm / Collect body $\varnothing$ 3,2mm
57006275	16	Ferma serralettrodo $\varnothing$ 4,0mm / Collect body $\varnothing$ 4,0mm
57006482	17	Ugello ceramico Gr. 4 - $\varnothing$ 6,4mm / Standard nozzle #4 - 6,4mm
57006423	17	Ugello ceramico Gr. 5 - $\varnothing$ 8mm / Standard nozzle #5 - 8mm
57006310	17	Ugello ceramico Gr. 6 - $\varnothing$ 9,6mm / Standard nozzle #6 - 9,6mm
57006311	17	Ugello ceramico Gr. 7 - $\varnothing$ 11,2mm / Standard nozzle #7 - 11,2mm
57006301	17	Ugello ceramico Gr. 8 - $\varnothing$ 12,8mm / Standard nozzle #8 - 12,8mm
57006289	19	Isolatore gas lens / Gaslens insulator
57006673	20	Diffusore gas lens $\varnothing$ 1,6mm / Gaslens collect body $\varnothing$ 1,6mm
57006120	20	Diffusore gas lens $\varnothing$ 2,4mm / Gaslens collect body $\varnothing$ 2,4mm
57006124	20	Diffusore gas lens $\varnothing$ 3,2mm / Gaslens collect body $\varnothing$ 3,2mm
57006125	20	Diffusore gas lens $\varnothing$ 4,0mm / Gaslens collect body $\varnothing$ 4,0mm
CHT54N18	21	Ugello ceramico gas lens Gr. 4 - $\varnothing$ 6,4mm / Gaslens standard nozzle #4 - 6,4mm
57006122	21	Ugello ceramico gas lens Gr. 5 - $\varnothing$ 8,0mm / Gaslens standard nozzle #5 - 8mm
57006121	21	Ugello ceramico gas lens Gr. 6 - $\varnothing$ 9,6mm / Gaslens standard nozzle #6 - 9,6mm
57006123	21	Ugello ceramico gas lens Gr. 7 - $\varnothing$ 11,2mm / Gaslens standard nozzle #7 - 11,2mm
57006309	21	Ugello ceramico gas lens Gr. 8 - $\varnothing$ 12,8mm / Gaslens standard nozzle #8 - 12,8mm
57006635	31	Cavo porta corrente/acqua 4m / Power cable 12ft PVC
57006275	31	Cavo porta corrente/acqua 8m / Power cable 25ft rubber
57006282	8	Impugnatura H200 / H200 Handle



# DWT 20 TORCIA TIG

## RAFFREDDATA AD ACQUA 250A, CICLO DI LAVORO: 60%

Water cooled TIG torch 250A, duty cycle: 60%

10

CODICE CODE	POSIZIONE ITEM	DESCRIZIONE DESCRIPTION
57006257	1	Corpo torcia / Torch body
57006730	1 - 1	Isolante / Cup gasket
57006332	12	Cappa corta / Short back cap
57006168	13	Cappa media / Medium back cap
57006331	14	Cappa lunga / Long back cap 146L
57006170	15	Serra elettrodo $\varnothing$ 1,6mm / Collect body $\varnothing$ 1,6mm
57006390	15	Serra elettrodo $\varnothing$ 2,4mm / Collect $\varnothing$ 2,4mm
57006303	15	Serra elettrodo $\varnothing$ 3,2mm / Collect body $\varnothing$ 3,2mm
57006366	16	Ferma serralettrodo $\varnothing$ 1,6mm / Collect body $\varnothing$ 1,6mm
57006365	16	Ferma serralettrodo $\varnothing$ 2,4mm / Collect body $\varnothing$ 2,4mm
57006305	16	Ferma serralettrodo $\varnothing$ 3,2mm / Collect body $\varnothing$ 3,2mm
57006575	17	Ugello ceramico Gr. 4 - $\varnothing$ 6,4mm / Standard nozzle #4 - 6,4mm
57006576	17	Ugello ceramico Gr. 5 - $\varnothing$ 8mm / Standard nozzle #5 - 8mm
57006577	17	Ugello ceramico Gr. 6 - $\varnothing$ 9,6mm / Standard nozzle #6 - 9,6mm
57006578	17	Ugello ceramico Gr. 7 - $\varnothing$ 11,2mm / Standard nozzle #7 - 11,2mm
57006264	20	Diffusore gas lens $\varnothing$ 1,6mm / Gaslens collect body $\varnothing$ 1,6mm
57006266	20	Diffusore gas lens $\varnothing$ 2,4mm / Gaslens collect body $\varnothing$ 2,4mm
57006268	20	Diffusore gas lens $\varnothing$ 3,2mm / Gaslens collect body $\varnothing$ 3,2mm
57006182	21	Ugello ceramico gas lens Gr. 4 - $\varnothing$ 6,4mm / Gaslens nozzle #4 - 6,4mm
57006169	21	Ugello ceramico gas lens Gr. 5 - $\varnothing$ 8,0mm / Gaslens nozzle #5 - 8mm
57006183	21	Ugello ceramico gas lens Gr. 6 - $\varnothing$ 9,6mm 54N16 / Gaslens nozzle #6 - 9,6mm
57006308	21	Ugello ceramico gas lens Gr. 7 - $\varnothing$ 11,2mm 54N15 / Gaslens nozzle #7 - 11,2mm
57006264	24	Cavo porta corrente/acqua 4m / Power cable 12ft
57006866	24	Cavo porta corrente/acqua 8m / Power cable 25ft
57006282	8	Impugnatura H100 / H100 Handle